



BOS PATIENCE

DP 2 | PSV

Class Notation: LR X 100 A1 Offshore Supply Ship, Firefighting, IWS, ECO, LMC, UMS, DPA.

Main Particulars

Vessel Name	BOS Patience
Flag	Luxembourg
IMO Number	9742089
Call Sign	PDGJ
Year Built	2017
Maximum Speed	13 Knots

Dimensions

Overall Length	83.40 m
Length between Perpendiculars	79.55 m
Breadth Moulded	18.00 m
Depth from Main Deck	8 m
Max Draught	6.70 m
Design Draught	6.00 m
Freeboard at Max Draught	13.10 mm
Clear Deck Space	850 m2

Capacities & Tonnage

Fuel Oil Cargo	1,464 m3
Fresh Water	1,035 m3
Mud/Brine	1,293 m3
Ballast/Drill Water	1,674 m3
Dry Bulk	260 m3
Deck Strength	10 t/m2 aft of #35
Deadweight at max draught	4,200 T
Gross/Net Tonnage	3,638 T / 1,295 T

Discharge Rates

Fuel Oil Cargo Pump	200 m3/h @ 90 m head
Fresh Water Pump	200 m3/h @ 90 m head
Mud/Brine Pump	75m3/h @18 Bar head
Ballast/Drill Water Pump	200 m3/h @90 m head

Accommodation

Total pax + crew	26 persons
Crew compliment	14 persons (14 single cabins)
Charterer Personnel	12 passengers (6 double cabins)

Machinery

Main Generators	2 x 2,186 BHP Diesel Electric 2 x 1,328 BHP Diesel Electric
Auxiliary Generators	
Emergency Generators	130 kW
Azimuth Thrusters	2 x 1,600 Kw
Bow Thrusters	2 x 1,179 BHP

Deck Machinery

Deck Cranes	3 t SWL @ 18 m
Tugger Winches	2 x 10 t @ 35m/min
Windlass/Mooring Winch	1 x 10t (100Kn)
Chain Stoppers	BHF 300 KN
Capstan	2 x 10 t @30m/min

Dynamic Positioning System

DP Class	DP2
System	Kongsberg K-Pos DP2
Software Modes	8.2.3.6
References	2 x DGPS, 1 x Radascan, 1 x Cyscan

Fire Fighting

Fire Fighting Class	Class 1
Pumps	3,820 m3 per hr
Monitors	2 x 1,200 m3 per hr > 120 m

Dimensions

Life Rafts	2 x 20 man and 1 x 6 man on each side
Rescue Boat	1 x 6 man MOB boat

Navigation Equipment

Radar no. 1	1 x X-Band radar:	JRC JMA-9122-9XA
Radar no. 2	1 x S-Band radar:	JMC JMA-9132-SA
Radar transponder unit (9G):		2 x Mc Murdo S4
DGPS:		1 x JRC JAN-901B-FOR
Eco sounder:		1 x JRC JFE-680
Auto pilot:	1 x YOKOGAWA PT500A-P-Analog	
Gyro compass:	1 x YOKOGAWA CMZ900d + 1 x900S	
Magnetic Compass:		1 x YOKOGAWA SR-165
Joystick control:		Integrated joystick control
ECDIS:	1 x JRC Navi-Sailor 4000 ECDIS MFD	
VDR:		1 x JRC JCY-1800

Communication Equipment

MF / HF radio:	JRC JSS-2150
VHF Radio:	JRC JHS-770S
Portable VHF Radio:	3 x Entel HT8982
Satellite EPIRB:	2 x Mc -Murdo S4
Inmarsat:	1 Inmarsat-C SSAS, 1 Inmarsat-C LIRT
Navtex receiver:	JRC NCR-333
SART	2 x Mc Murdo S4

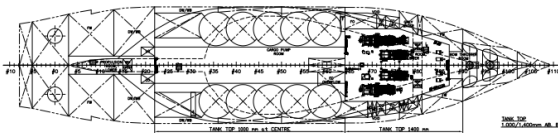
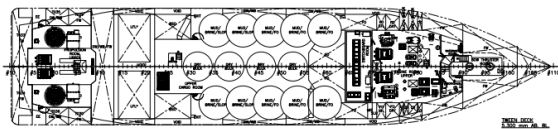
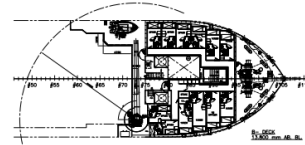
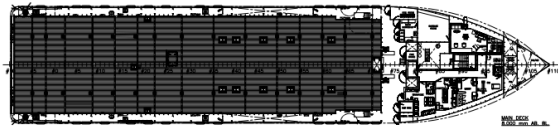
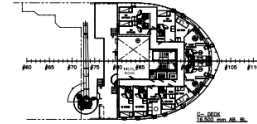
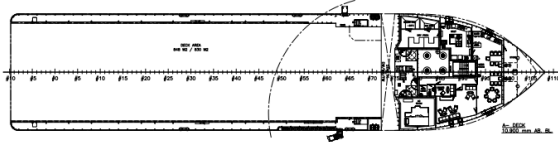
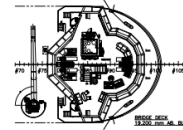
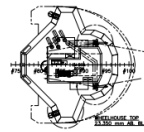
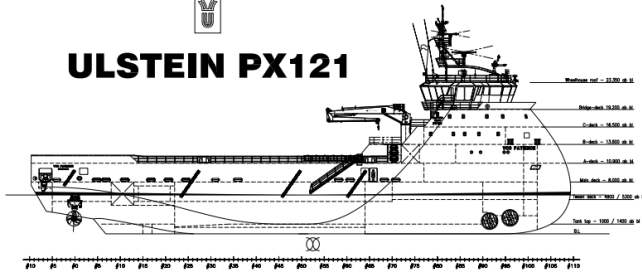
Automatic Identification System (AIS)	AIS JHS-183
Fleet broad band:	1 x JRC Navi-Sailor 4000 ECDIS MFD
Weather facsimile	1 x JRC JAX-9B

Fuel Consumption

Fuel consumption at 13 knots	15.5 mt/day
Fuel consumption at 10 knots	7 mt/day
In port	1 mt/day
DP mode	4 mt/day
Fuel type ISO 8217: 2005 DMA or later revisions	



ULSTEIN PX121



PRINCIPAL DIMENSIONS:
 L.O.A. APPROX.: 83.3 m
 L.P.P. (Design): 76.5 m
 L.F. (DNV PL3 Ch1 Sec.1L): 79.6 m
 BREADTH MOULDED: 18.0 m
 DEPTH TO MAIN DECK: 8.0 m
 MAX. DRAUGHT (SLW): 6.7 m
 DESIGN DRAUGHT: 6.0 m

FLAG: Dutch

NO.	DESCRIPTION	UNIT	QTY	ISSUED	BY	CHKD
1.1	GENERAL ARRANGEMENT PLAN					
1.2	GENERAL ARRANGEMENT PLAN					
1.3	GENERAL ARRANGEMENT PLAN					
1.4	GENERAL ARRANGEMENT PLAN					
1.5	GENERAL ARRANGEMENT PLAN					
1.6	GENERAL ARRANGEMENT PLAN					
1.7	GENERAL ARRANGEMENT PLAN					
1.8	GENERAL ARRANGEMENT PLAN					
1.9	GENERAL ARRANGEMENT PLAN					
1.10	GENERAL ARRANGEMENT PLAN					
1.11	GENERAL ARRANGEMENT PLAN					
1.12	GENERAL ARRANGEMENT PLAN					
1.13	GENERAL ARRANGEMENT PLAN					
1.14	GENERAL ARRANGEMENT PLAN					
1.15	GENERAL ARRANGEMENT PLAN					
1.16	GENERAL ARRANGEMENT PLAN					
1.17	GENERAL ARRANGEMENT PLAN					
1.18	GENERAL ARRANGEMENT PLAN					
1.19	GENERAL ARRANGEMENT PLAN					
1.20	GENERAL ARRANGEMENT PLAN					
1.21	GENERAL ARRANGEMENT PLAN					
1.22	GENERAL ARRANGEMENT PLAN					
1.23	GENERAL ARRANGEMENT PLAN					
1.24	GENERAL ARRANGEMENT PLAN					
1.25	GENERAL ARRANGEMENT PLAN					
1.26	GENERAL ARRANGEMENT PLAN					
1.27	GENERAL ARRANGEMENT PLAN					
1.28	GENERAL ARRANGEMENT PLAN					
1.29	GENERAL ARRANGEMENT PLAN					
1.30	GENERAL ARRANGEMENT PLAN					
1.31	GENERAL ARRANGEMENT PLAN					
1.32	GENERAL ARRANGEMENT PLAN					
1.33	GENERAL ARRANGEMENT PLAN					
1.34	GENERAL ARRANGEMENT PLAN					
1.35	GENERAL ARRANGEMENT PLAN					
1.36	GENERAL ARRANGEMENT PLAN					
1.37	GENERAL ARRANGEMENT PLAN					
1.38	GENERAL ARRANGEMENT PLAN					
1.39	GENERAL ARRANGEMENT PLAN					
1.40	GENERAL ARRANGEMENT PLAN					
1.41	GENERAL ARRANGEMENT PLAN					
1.42	GENERAL ARRANGEMENT PLAN					
1.43	GENERAL ARRANGEMENT PLAN					
1.44	GENERAL ARRANGEMENT PLAN					
1.45	GENERAL ARRANGEMENT PLAN					
1.46	GENERAL ARRANGEMENT PLAN					
1.47	GENERAL ARRANGEMENT PLAN					
1.48	GENERAL ARRANGEMENT PLAN					
1.49	GENERAL ARRANGEMENT PLAN					
1.50	GENERAL ARRANGEMENT PLAN					
1.51	GENERAL ARRANGEMENT PLAN					
1.52	GENERAL ARRANGEMENT PLAN					
1.53	GENERAL ARRANGEMENT PLAN					
1.54	GENERAL ARRANGEMENT PLAN					
1.55	GENERAL ARRANGEMENT PLAN					
1.56	GENERAL ARRANGEMENT PLAN					
1.57	GENERAL ARRANGEMENT PLAN					
1.58	GENERAL ARRANGEMENT PLAN					
1.59	GENERAL ARRANGEMENT PLAN					
1.60	GENERAL ARRANGEMENT PLAN					
1.61	GENERAL ARRANGEMENT PLAN					
1.62	GENERAL ARRANGEMENT PLAN					
1.63	GENERAL ARRANGEMENT PLAN					
1.64	GENERAL ARRANGEMENT PLAN					
1.65	GENERAL ARRANGEMENT PLAN					
1.66	GENERAL ARRANGEMENT PLAN					
1.67	GENERAL ARRANGEMENT PLAN					
1.68	GENERAL ARRANGEMENT PLAN					
1.69	GENERAL ARRANGEMENT PLAN					
1.70	GENERAL ARRANGEMENT PLAN					
1.71	GENERAL ARRANGEMENT PLAN					
1.72	GENERAL ARRANGEMENT PLAN					
1.73	GENERAL ARRANGEMENT PLAN					
1.74	GENERAL ARRANGEMENT PLAN					
1.75	GENERAL ARRANGEMENT PLAN					
1.76	GENERAL ARRANGEMENT PLAN					
1.77	GENERAL ARRANGEMENT PLAN					
1.78	GENERAL ARRANGEMENT PLAN					
1.79	GENERAL ARRANGEMENT PLAN					
1.80	GENERAL ARRANGEMENT PLAN					
1.81	GENERAL ARRANGEMENT PLAN					
1.82	GENERAL ARRANGEMENT PLAN					
1.83	GENERAL ARRANGEMENT PLAN					
1.84	GENERAL ARRANGEMENT PLAN					
1.85	GENERAL ARRANGEMENT PLAN					
1.86	GENERAL ARRANGEMENT PLAN					
1.87	GENERAL ARRANGEMENT PLAN					
1.88	GENERAL ARRANGEMENT PLAN					
1.89	GENERAL ARRANGEMENT PLAN					
1.90	GENERAL ARRANGEMENT PLAN					
1.91	GENERAL ARRANGEMENT PLAN					
1.92	GENERAL ARRANGEMENT PLAN					
1.93	GENERAL ARRANGEMENT PLAN					
1.94	GENERAL ARRANGEMENT PLAN					
1.95	GENERAL ARRANGEMENT PLAN					
1.96	GENERAL ARRANGEMENT PLAN					
1.97	GENERAL ARRANGEMENT PLAN					
1.98	GENERAL ARRANGEMENT PLAN					
1.99	GENERAL ARRANGEMENT PLAN					
2.00	GENERAL ARRANGEMENT PLAN					