



BRITOil DEFIANCE

8000 BHP | 116 TBP | DP2 AHTS

Class Notation: ABS A1, Offshore Support Vessel, (Supply -HNLS, AH, Tow, OSR – C1, FFV 1) SPS, AMS, DPS-2, UWILD, BWT

Main Particulars

Flag	Singapore
Call Sign	T2AP6
IMO No.	9761188
Year Built	2024
Max Summer Draft	6.10m
Gross Tonnage	3272T
Net Tonnage	1031T
Deadweight (Max Draught)	2,200 T
Displacement	TBA

Dimensions

Length Overall	73.00m
Beam Moulded	17.20m
Depth Moulded	7.50m

Performance

Max Speed	abt 18m ³ per day @ 13 kts
Service Speed	abt 10 m ³ per day @ 10 kts
Towing	abt 20m ³ per day
Standby	abt 1.2m ³ per day

**Subject to actual weather and operating conditions*

Cargo Deck

Deck Cargo Area	425m ²
Deck Cargo Dimension	31.5m x 13.5m
Deck Cargo Capacity	700T
Deck Strength	7T/m ²

Capacities

Cargo Fuel Oil Tank*	557 m ³
Fresh Water	414 m ³
Drill Water*	1,200 m ³
Liquid mud / brine / ORO*	395 m ³
Dry Bulk Tank	186 m ³
Foam	12m ³
Foam	12m ³
Detergent	12 m ³

**Indicates tanks with shared capacity*

Main Engines & Generators

Main Engine	2 x Wärtsilä 6L32 8040 BHP
Generator	3 x CATERPILLAR C18 500KW
Shaft Generators	2 x MJRM 500 MA42 1,800KW
Emergency Generators	1 x Cummins QSB7-DM&LSAM44.2 99KW

Thrusters & Propulsion

Stern Thruster	8T (550 kW) electric driven
Propeller	CPP

Deck Crane

Fixed Crane	3T SWL @ 10m
-------------	--------------

Anchor Handling/Tow Equipment

Tow/Anchor Handling Winch	MacGregor
Stall Pull Capacity	150T
Brake Holding Capacity	250T
Tow Drum Capacity	1,500 m x 64 mm wire rope
Anchor Handling Capacity	1,500 m x 64 mm wire rope
Spare tow wire capacity	1,500 m x 64 mm wire rope
Tugger Winch	2 x 10T @ 15m/min
Capstan	2 x 5T @ 15m/min
Shark Jaws	2 x Karmfork of 300T SWL
Tow Pins	2 x 300T SWL
Stern Roller	5m x 1.6m; 300T

Mooring Equipment

Anchor	2 x 1,610 kg
Anchor Chain	2 x 440m x 40mm
Anchor Windlass	MacGregor

Discharge Rates

Fuel/Pump	100 m ³ /hr @ 70m head
Drill Water/Pump	100 m ³ /hr @ 70m head
Fresh Water/pump	100 m ³ /hr @ 70m head
Liquid Mud/Brine/ORO	75 m ³ /hr @ 70m head
Dry Bulk Tank	40 m ³ /hr @ 60m head

BRITTOIL DEFIANCE

8000 BHP | 116 TBP | DP2 AHTS

Comminications Equipment

HF radio	Furuno model RC-1800T
VHF radio	Furuno FM-8800S
Portable VHF radio	3 x McMurdo Model R2 GMDSS
Satellite EPIRB	McMurdo model SMARTFIND E5
Navtex receiver	Furuno NX-700A (GMDSS)
SART	2 x McMurdo S4 Rescue SART
AIS	Furuno FA-150
E-RFMS	Ascendz Marorka

Navigation Equipment

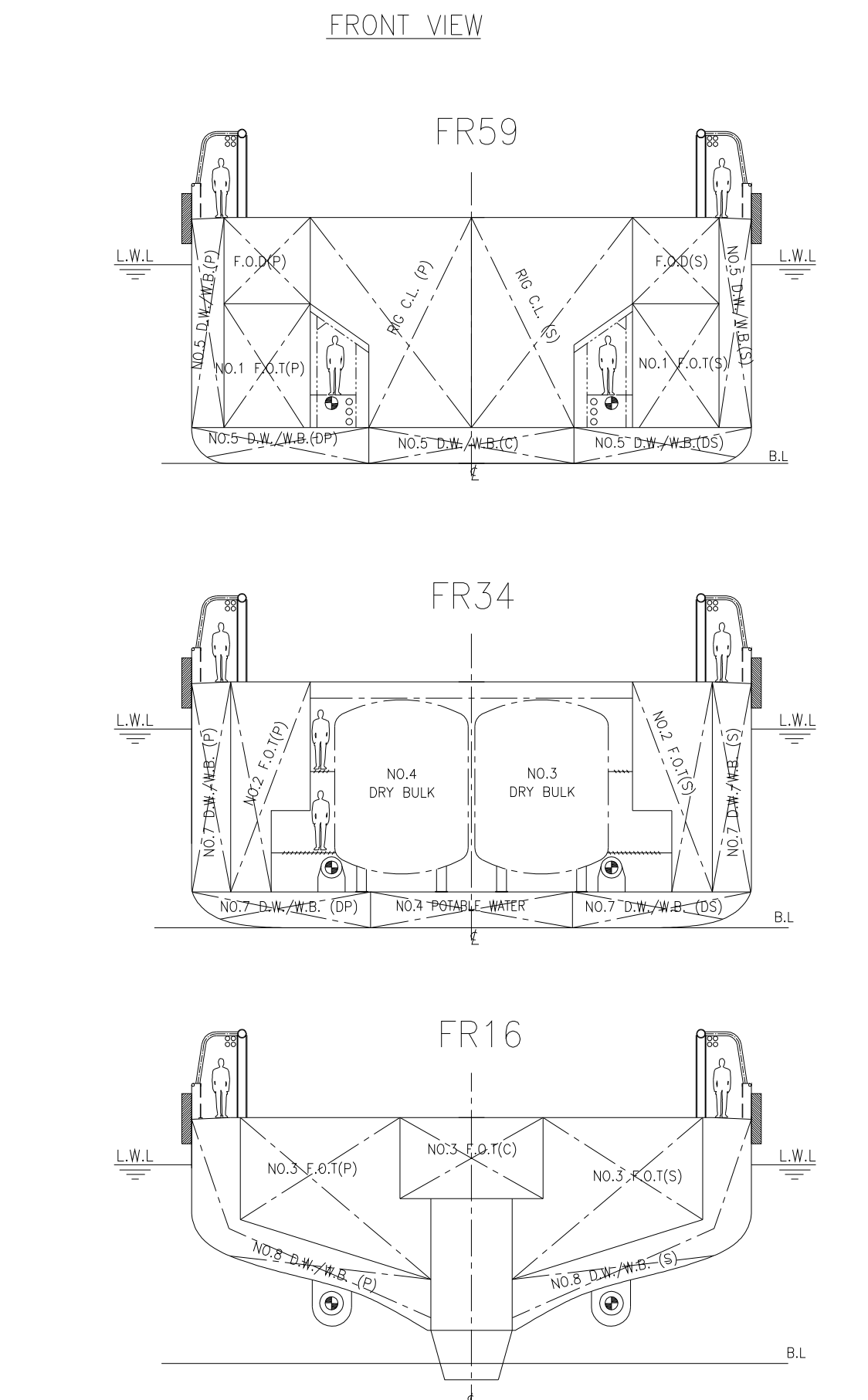
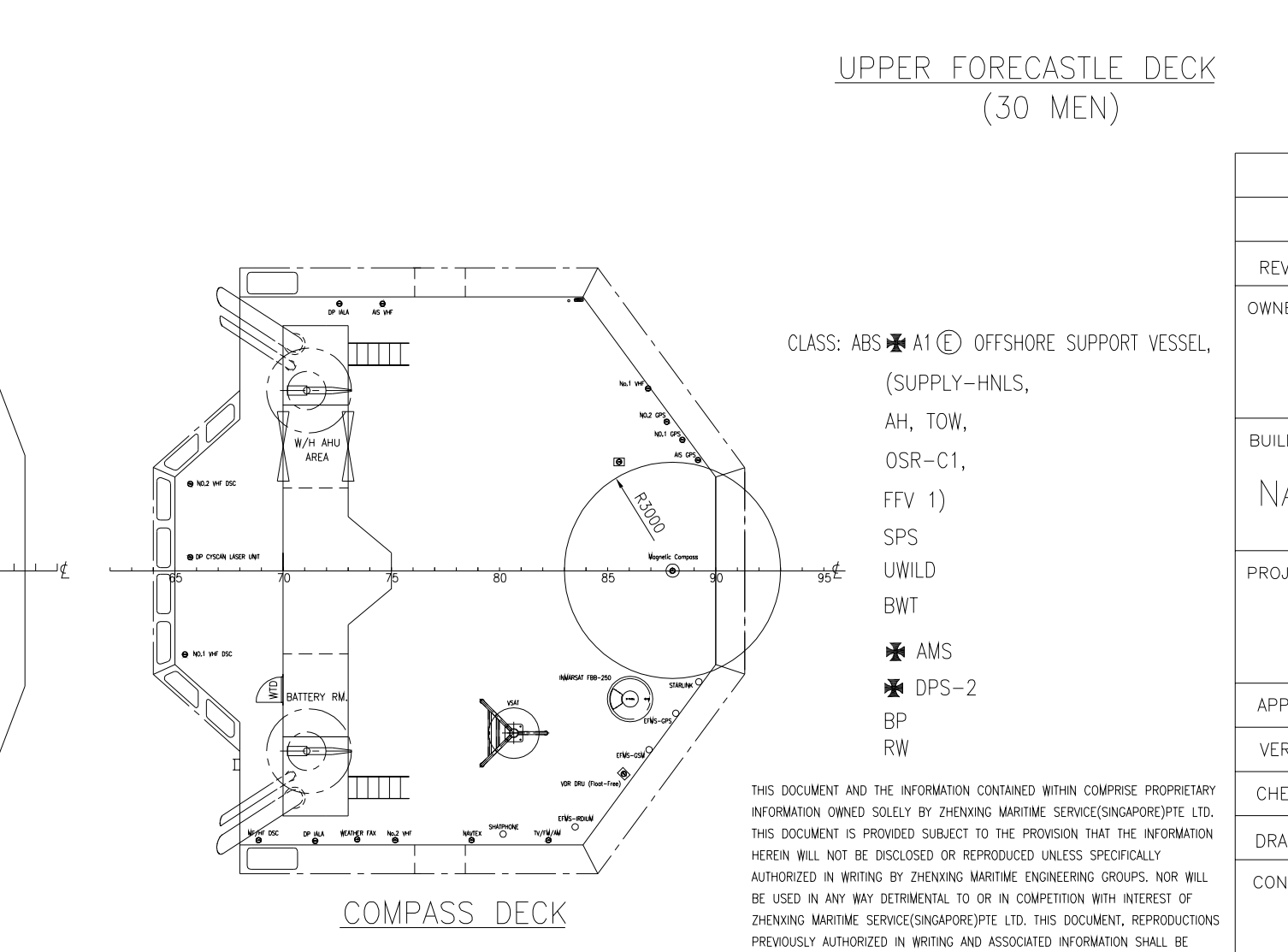
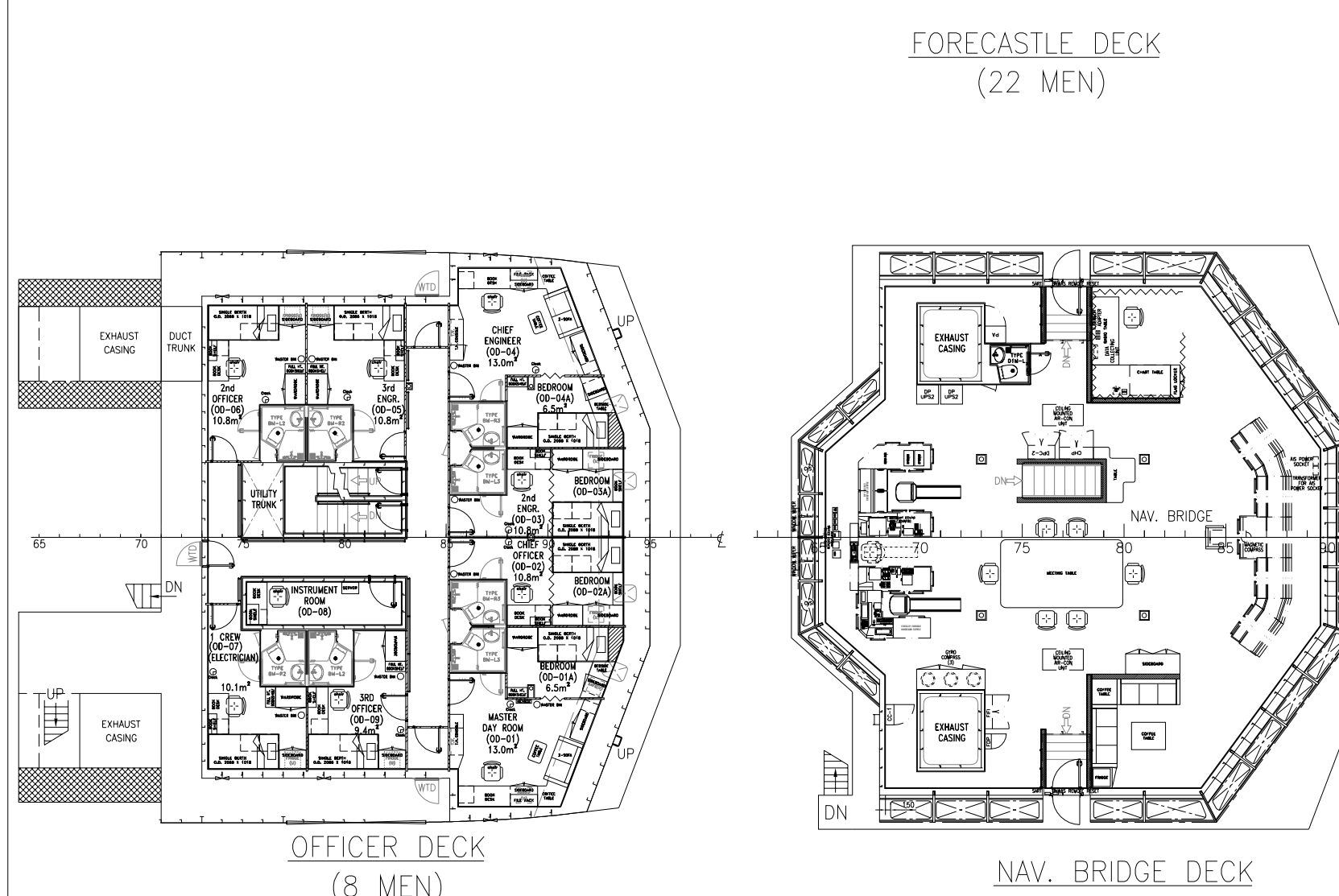
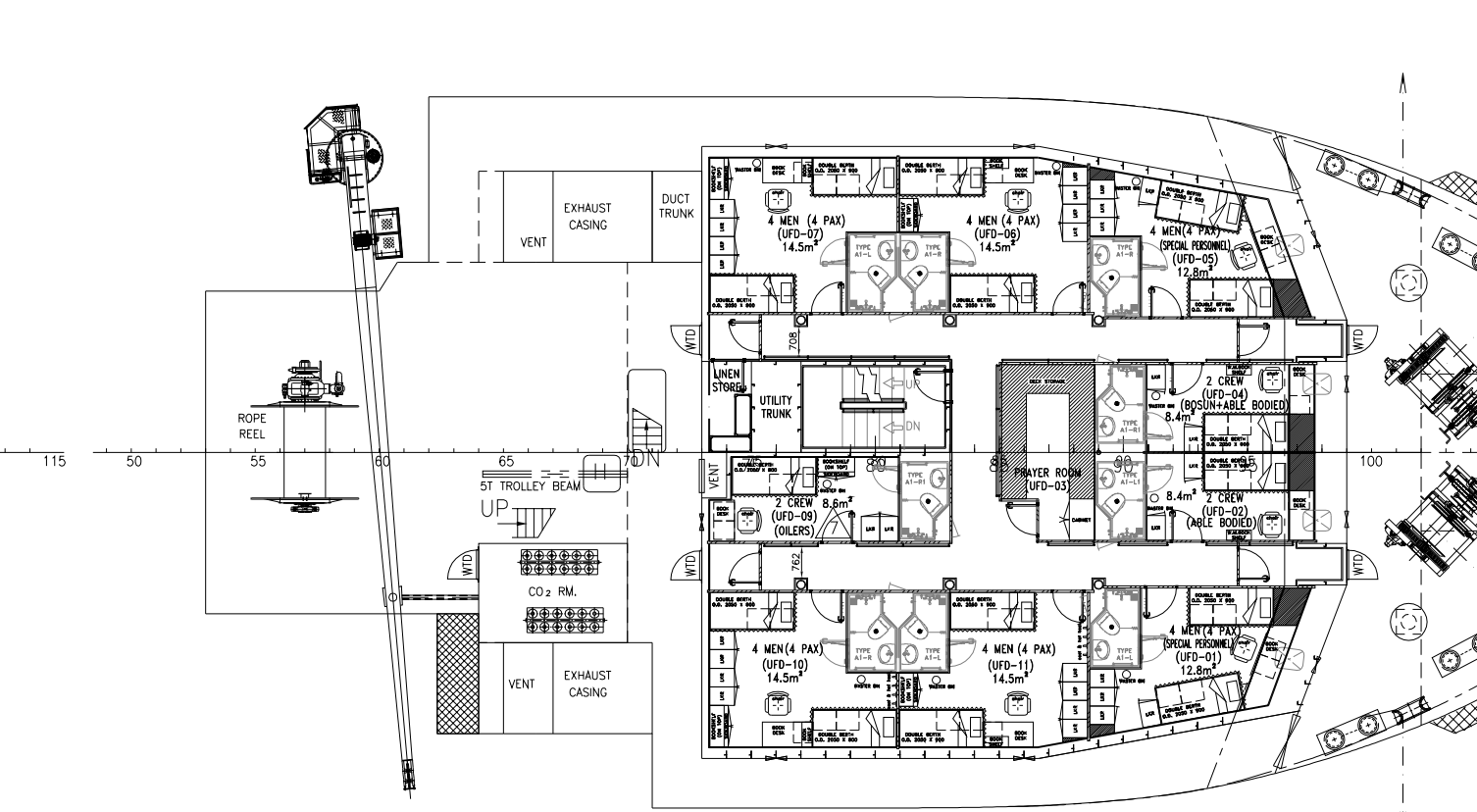
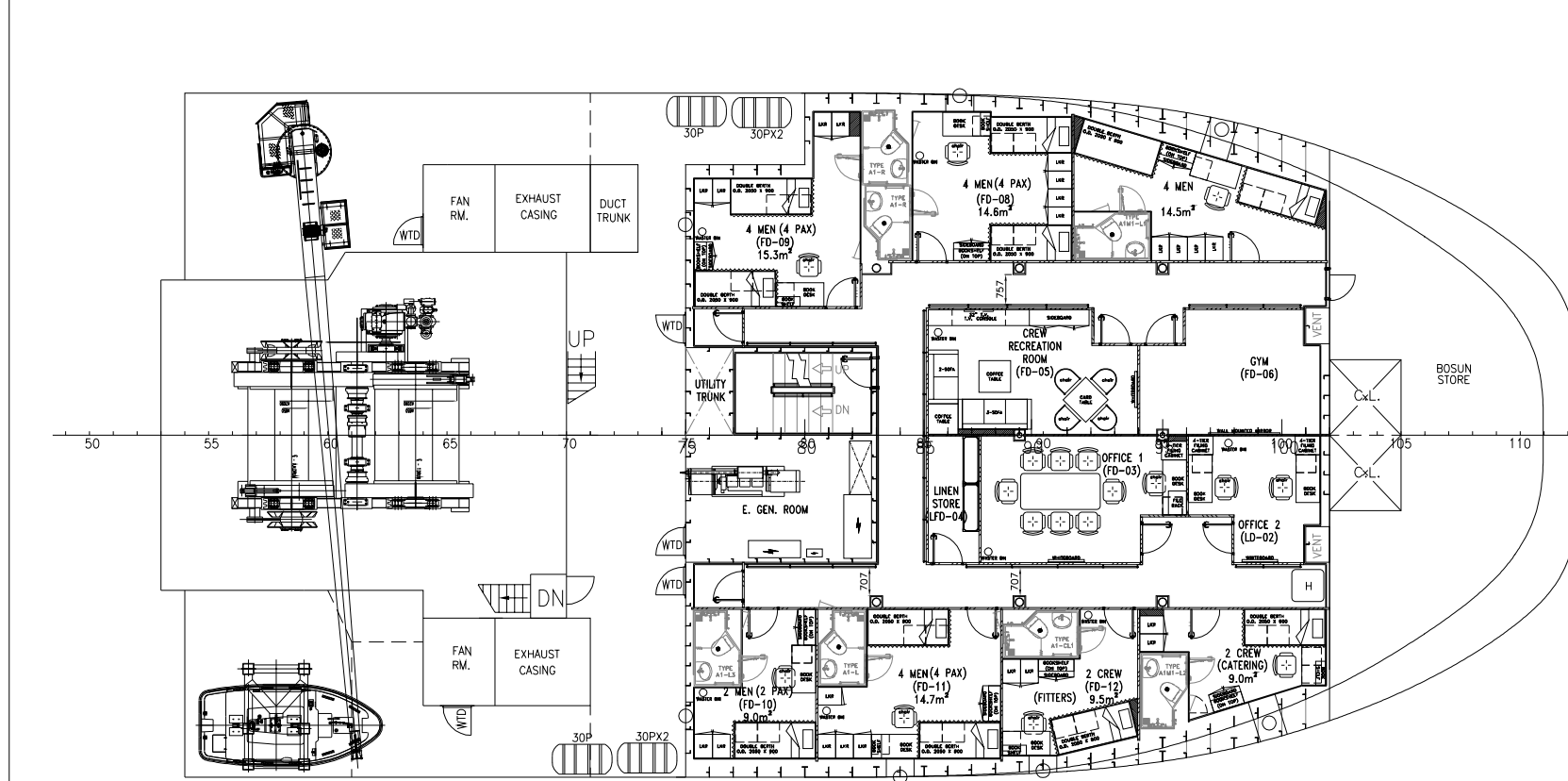
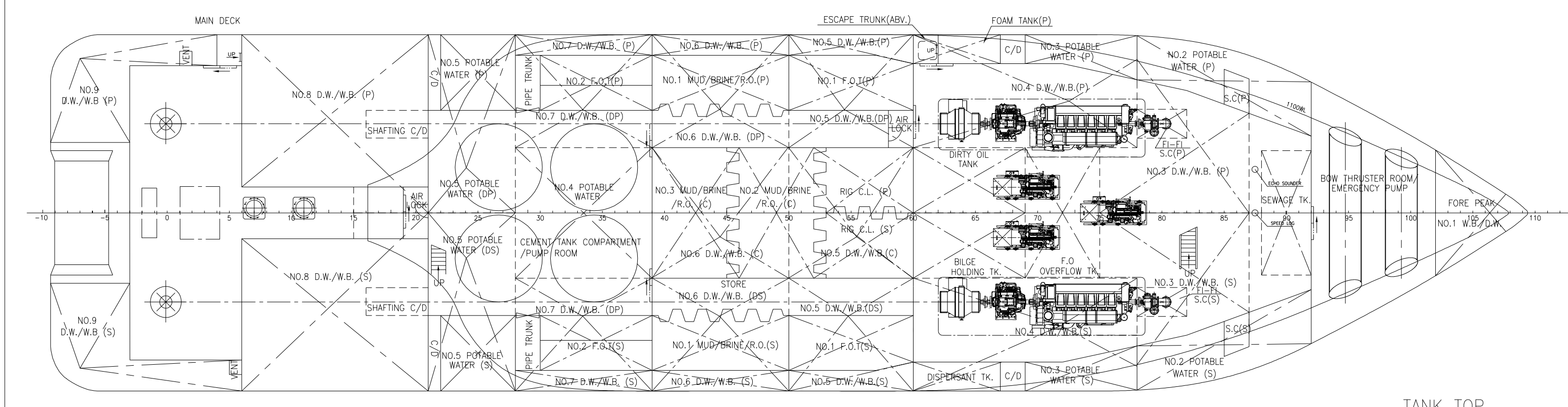
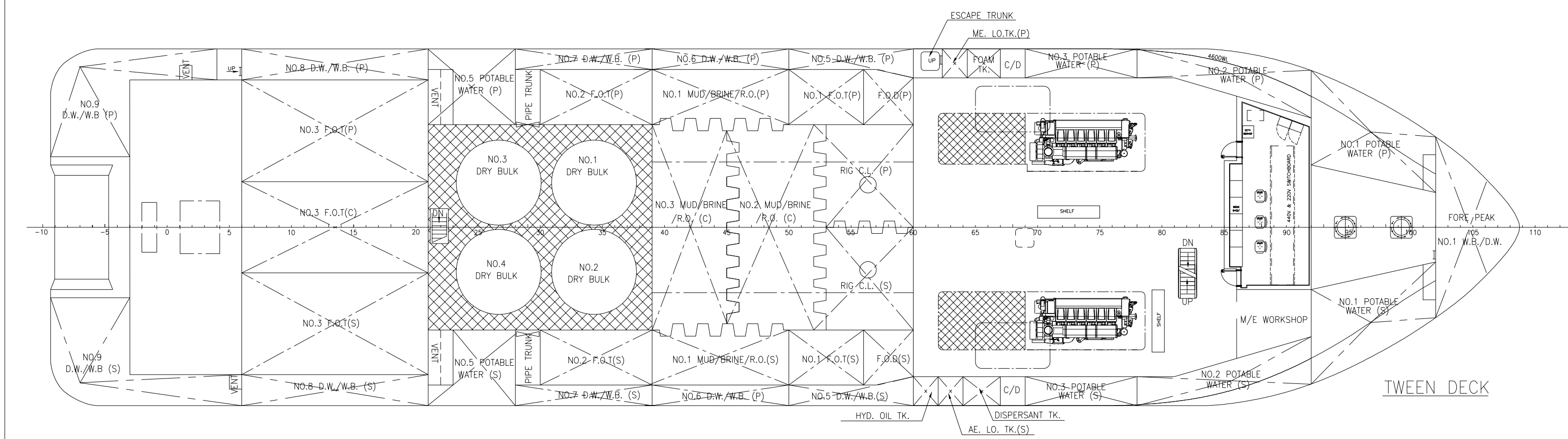
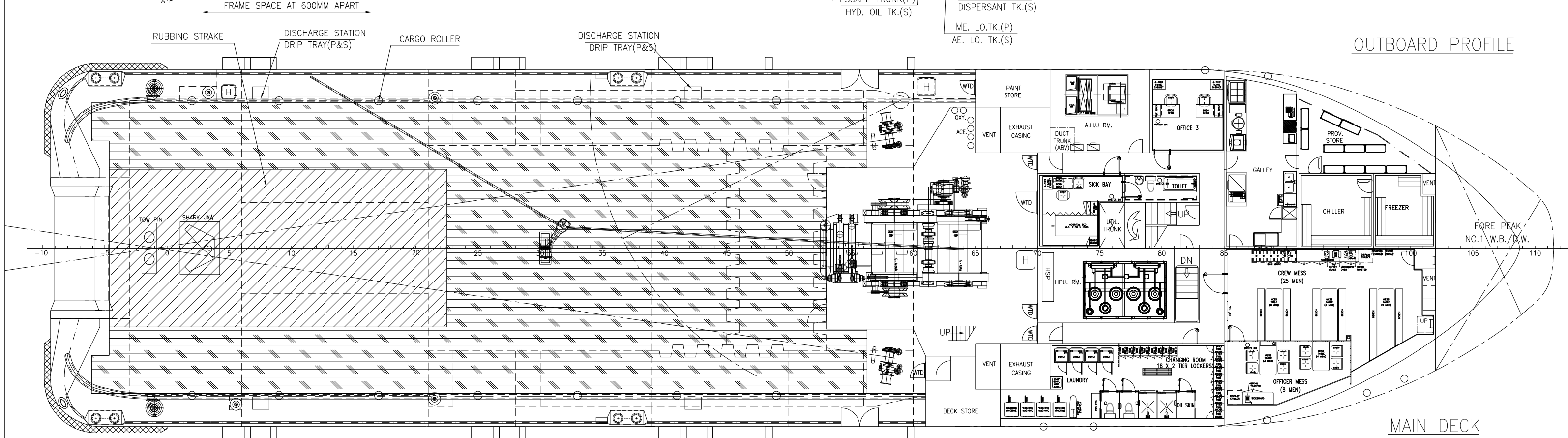
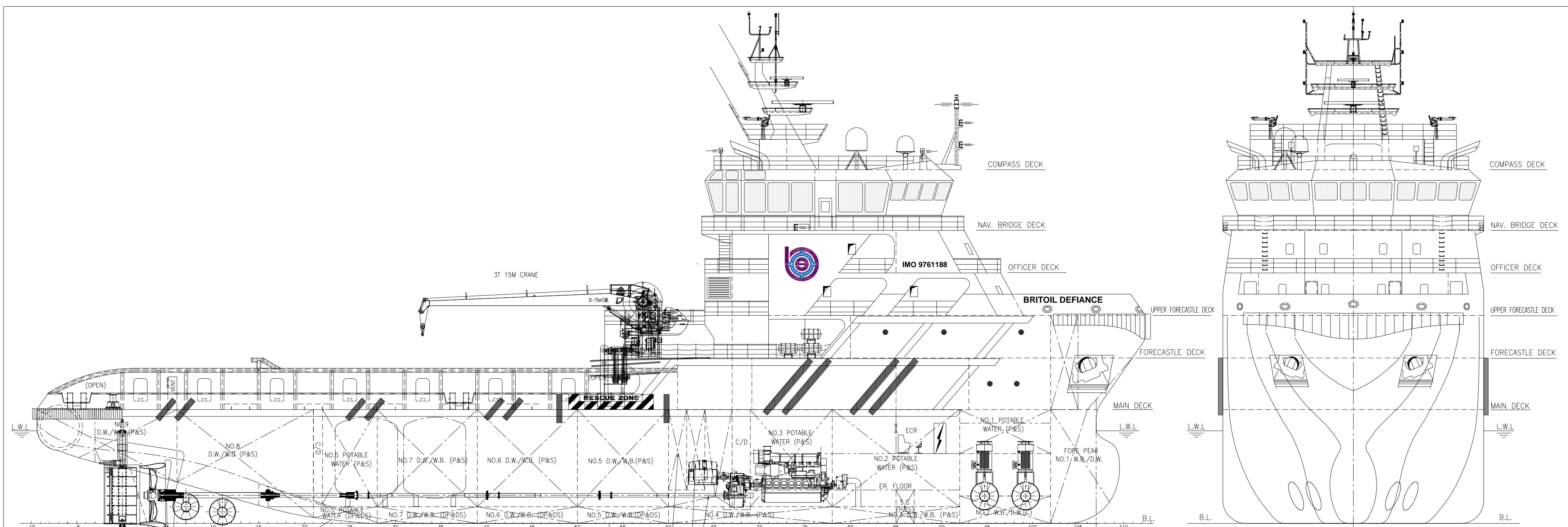
Radar no. 1	X-Band radar
Radar no. 2	S-Band radar
GPS	GPS plotter
Echo sounder	Navigational Echo-Sounder
Auto pilot	Auto pilot system
Gyro compass	3 x gyro compass
Magnetic compass	1 x magnetic compass
Dynamic positioning	Kongsberg DPS-2

Fire Fighting and Rescue

Firefighting System	FiFi-1
FiFi Pump	2 x 1,200 m ³ /hr
FiFi Monitor	2 x 1,200 m ³ /hr
Spray Boom	2 x 6m
Rescue Boat	1 x 6 men with 25hp OBM

Accommodation

Cabins	11 x 1 bed; 14 x 2 beds Total 39 beds
Hospital	1 bed



PRINCIPAL PARTICULARS	
LENGTH OA	73.00 M
LENGTH BP	64.20 M
BEAM MLD.	17.20 M
DEPTH MLD.	7.50 M
DRAFT DESIGNED	5.20 M
DRAFT SCANTLING	6.10 M
COMPLEMENT	60 MEN
F.O.	750 M ³
MUD/BRINE/R.O.	600 M ³
POTABLE WATER	550 M ³
WB/DW	1,000 M ³
CEMENT	230 M ³
RIG C.L.	210 M ³
DECK CARGO SPACE	500 M ²
MAIN ENGINE	3,000KW X 2
BOLLARD PULL	ABT. 110 T
TRIAL SPEED	ABT. 13 KTS
MAX DWT	ABT. 2,200 T

8	ISSUED AS PER BUILT	WJF	NOV-25-2024
7	AMENDED AS PER OWNER COMMENTS	ZF	NOV-11-2015
REV NO.	REVISION DESCRIPTION	BY	DATE
OWNER	BRITOL OFFSHORE SERVICES PTE LTD., 振興海事服務(新加坡)私人有限公司		
BUILDER	NANTONG TONGSHUN SHIPBUILDING & REPAIRING CO., LTD. HULL NO.: TS140117/18		
PROJECT	73M ANCHOR HANDLING TUG/SUPPLY /OIL RECOVERY VESSEL BRITOL DEFIANCE		
APPROVE	LEO	DWG TITLE:	JOB NO.: P-1731
VERIFY	ZS	GENERAL ARRANGEMENT	DWG NO.: ZX-P2425-PB-ME-401
CHECKER	WSH	SCALE:	SCALE: 1:175 (A1)
DRAWER	WJF	CLASS:	CLASS: ABS
CONSULTANT	ZHENXING MARITIME SERVICE (SINGAPORE) PTE LTD 振興海事服務(新加坡)私人有限公司		
ADD: 2 VENTURE DRIVE#16-32 VISION EXCHANGE SINGAPORE 608526 TEL: +65 66506795 EMAIL: Leo.Leo@zx-maritime.com			

CLASS: ABS A1 (E) OFFSHORE SUPPORT VESSEL,
(SUPPLY-HNLS,
AH, TOW,
OSR-C1,
FFV 1)
SPS
UWILD
BWT
AMS
DPS-2
BP
RW

THIS DOCUMENT AND THE INFORMATION CONTAINED WITHIN COMPRISE PROPRIETARY INFORMATION OWNED SOLELY BY ZHENXING MARITIME SERVICE(SINGAPORE) PTE LTD. THIS DOCUMENT IS PROVIDED SUBJECT TO THE PROVISION THAT THE INFORMATION HEREIN WILL NOT BE DISCLOSED OR REPRODUCED UNLESS SPECIFICALLY AUTHORIZED IN WRITING BY ZHENXING MARITIME ENGINEERING GROUPS. NOR WILL BE USED IN ANY WAY DETRIMENTAL TO OR IN COMPETITION WITH INTEREST OF ZHENXING MARITIME SERVICE(SINGAPORE) PTE LTD. THIS DOCUMENT, REPRODUCTIONS PREVIOUSLY AUTHORIZED IN WRITING AND ASSOCIATED INFORMATION SHALL BE RETURNED WHEN THEY HAVE SERVED THEIR INTENDED PURPOSES, OR ON DEMAND.