



# BOS Hestia

## 5150 BHP | 68.4 TBP | AHTS

**Class Notation:** Tug, Supply Vessel; Anchor Handling; Fire-Fighting Ship 1; water spraying; Oil Recovery Ship; unrestricted navigation; SPS; Efficient Ship 14.5

### Main Particulars

Flag	Italian
Call Sign	ICCD
IMO No.	29061
Year Built	2009
Design Draft	4.95 M
Max Summer Draft	4.95 M
Gross Tonnage	1678 t
Net Tonnage	503 t
Deadweight (Max Draught)	1313 t

### Dimensions

Length Overall	59.25 m
Beam	14.95 m
Depth Moulded	6.100 m

### Performance

Max Speed	About 11.5 MT @12 knots
Economical Speed	About 6 MT @8 knots

*\*Subject to actual weather and operating*

### Cargo Deck

Deck Cargo Area	350 m <sup>2</sup>
Deck Cargo Dimension	28 m x 12.5 m
Deck Cargo Capacity	500 t
Deck Strength	7.5 t/m <sup>2</sup>

### Capacities

Fuel Tank	536,64 m <sup>3</sup>
Fresh Water	372,13 m <sup>3</sup>
Drill Water*	253 m <sup>3</sup>
Mud/Brine Tank*	419,42 m <sup>3</sup>
Dry Bulk Tank	4x1650 cu ft each, total 6,600 cu ft
Oil Recovery*	As per mud tank

### Main Engines & Generators

Main Engine	2 x 1920 kW/5150 BHP
Generator	3 x CAT C18 350 kW

### Thrusters & Propulsion

Bow Thruster	1 x 390 kW – 8 thruster
Propeller	2 x CPP in Fixed Nozzles

### Deck Crane

Fixed Crane	1 x 3 t @9m
-------------	-------------

### Anchor Handling/Tow Equipment

Tow/Anchor Handling Winch	MG-AHTW/FW-150/200
Stall Pull Capacity	150 t
Brake Holding Capacity	200 t
Tow Drum Capacity	1000 m x 56 mm
Anchor Handling Capacity	1000 m x 56 mm

Tugger Winch	2 x 10 t @15m/min
Capstan	2 x 5 t @15m/min
Shark Jaws	1 set of karmfork – 200 t SWL
Tow Pins	2 x closed top type – 200 t SWL
Stern Roller	4.4 m x 1.6 m – SWL 200 t SWL

### Tow/Anchor Handling Wires

Main Tow Wire	1000 m x 56mm
Spare Tow Wire	1000 m x 56mm
Anchor Handling Wire	150 m x 56mm

### Discharge Rates

Drill Water/Pump	100 m3/hr at 75 m head
Fresh Water/pump	100 m3/hr at 75 m head
Fuel/Pump	150 m3 per hr at 75 m head
Brine/Pump	75 m3/hr
Liquid Mud/Pump	75 m3/hr
Dry Bulk Tank	4 x 1650 cu ft each

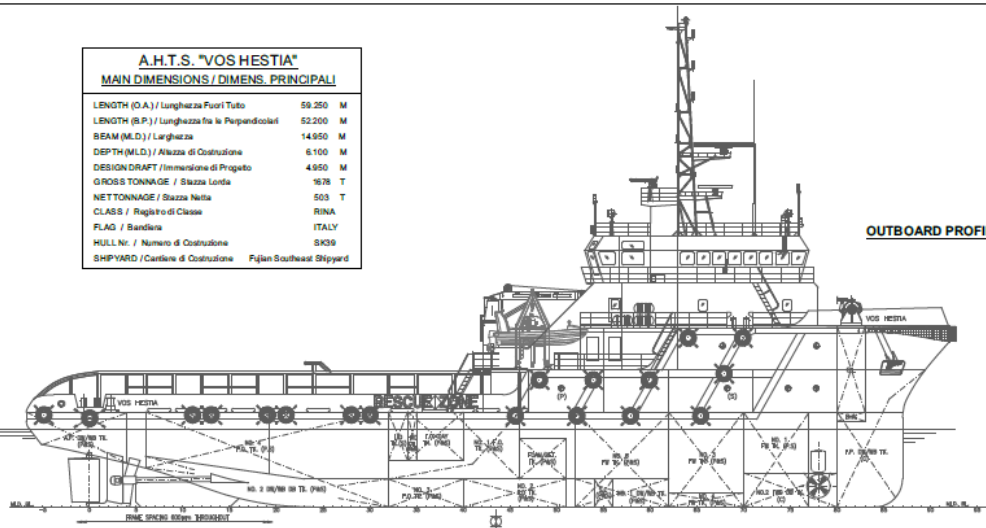
### Fire Fighting and Rescue

Firefighting System	FiFi 1 – 2 x 1200 cu m per hr
FiFi Pump	120 m x 50 m
FiFi Monitor	2
Spray Boom	yes
Rescue Boat	1 x FRC – 15 pax launched by 1 x Davit

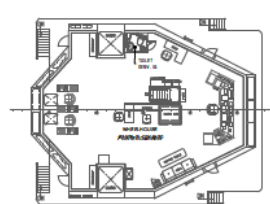
### Accommodation

Crew	13
Passengers	23
Total bunks	36

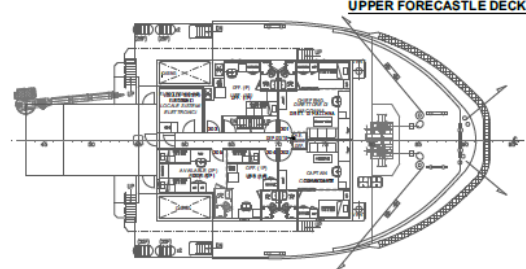
A.H.T.S. "VOS HESTIA"	
MAIN DIMENSIONS / DIMENS. PRINCIPALI	
LENGTH (O.A.) / Lunghezza Puro Tutto	59.250 M
LENGTH (B.P.) / Lunghezza fra le Perpendicolari	52.200 M
BEAM (M.L.D.) / Larghezza	14.650 M
DEPTH (M.L.D.) / Altezza di Costruzione	6.100 M
DESIGN DRAFT / Immersione di Progetto	4.950 M
GROSS TONNAGE / Stazza Lorda	1678 T
NET TONNAGE / Stazza Netta	503 T
CLASS / Registro di Classe	RINA
FLAG / Bandiera	ITALY
HULL No. / Numero di Costruzione	SK39
SHIPYARD / Cantiere di Costruzione	Fujian Southeast Shipyard



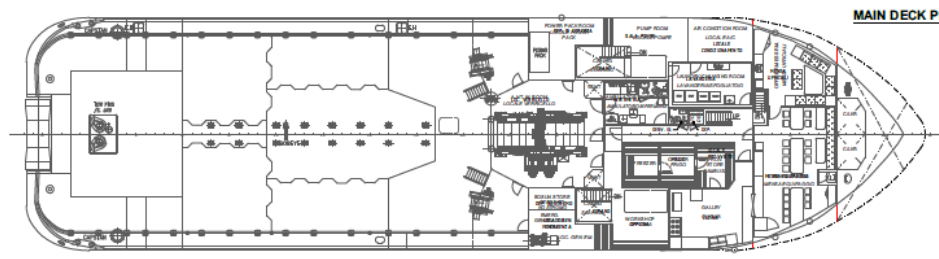
OUTBOARD PROFILE



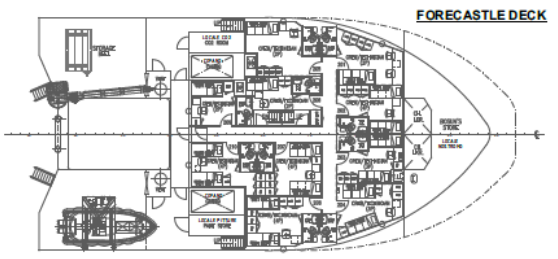
BRIDGE DECK PLAN



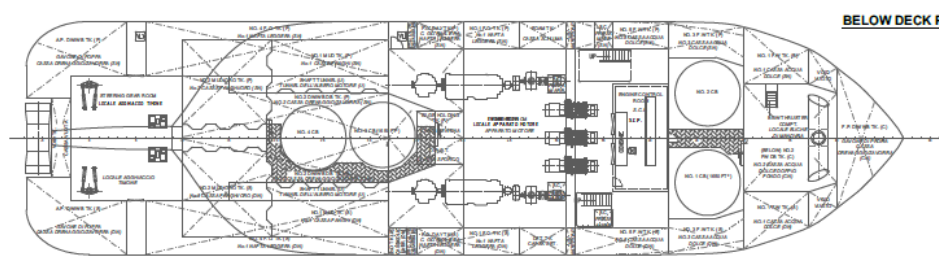
UPPER FORECASTLE DECK



MAIN DECK PLAN



FORECASTLE DECK



BELOW DECK PLAN

**RINA** Italian Plan Approval Centre  
 Archivato  
 Filed  
 Per informazioni / For information  
 N. CSST0000017212  
 10 MAY 2019  
 Genova  
**RINA**  
 Via Salaria 459 - 00198 Roma (Italy)

C	REMOVED WORKBOAT & DAVIT SYSTEM PORT SIDE	04.02.2019	Talco C.
B	INSTALLATA WORKBOAT & DAVIT SYSTEM PORT SIDE	20.02.2017	Talco C.
A	INSTALLATA PRIMA DAVIT SYSTEM LW/O. RE SCURICAT AT STB SIDE	24.08.2014	Talco C.
REV	DESCRIZIONE MODIFICHE	DATA	FIRMA
V	<b>Vroon Offshore Services S.r.l.</b> Piazzale Borge Pilo 39 Torre B Piano 1° - 16129 GENOVA - ITALY	1:150	14.11.16
APPROV.	<b>VOS HESTIA</b> IMO 9529061 — RI 87779		DIS. N° VHE-000-001
DATA	<b>GENERAL ARRANGEMENT</b> PIANO GENERALE		TAV.
F			FILE
APPROV.			
DATA			
SCALE			
FILE			